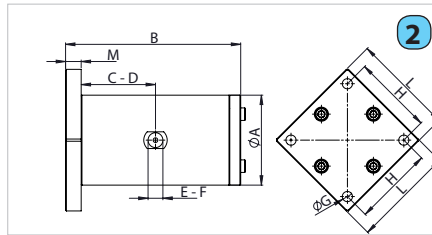
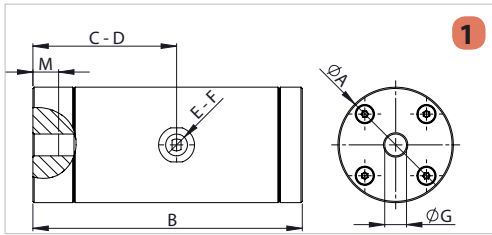




TECHNICAL DATA SHEET

	Draw.	Overall dimension														Weight				
		A		B		C		D		E	F	G	H		L		M	kg	lb	
		mm	in	mm	in	mm	in	mm	in				mm	in	mm	in	mm	in	kg	lb
K15	1	32	1,26	69	2,72	37	1,46	37	1,46	M5	1/8"	M8	/	/	/	/	9	0,35	0,17	0,37
K22	1	45	1,77	105	4,13	56	2,2	56	2,2	1/8"	1/8"	M10	/	/	/	/	13	0,51	0,5	1,1
K30	1	60	2,36	116	4,57	62	2,44	62	2,44	1/4"	1/4"	M12	/	/	/	/	13	0,51	1,03	2,27
K45	2	80	3,15	151	5,94	78	3,07	78	3,07	1/4"	3/8"	ø 8,5	72	2,83	90	3,54	15	0,59	2,86	6,3
K60	2	115	4,53	224	8,82	115	4,53	115	4,53	1/2"	1/2"	ø 13	102	4,02	130	5,12	20	0,79	4,6	10,14



Type	Features																				
	2 BAR - 29 PSI				4 BAR - 58 PSI				6 BAR - 87 PSI												
	Vibration	Force		Dynamic Moment		Air Consump.		Vibration	Force		Dynamic Moment		Air Consump.		Vibration	Force		Dynamic Moment		Air Consump.	
VPM	kg	lb	kg*cm	in*lb	l/min	cfm	VPM	kg	lb	kg*cm	in*lb	l/min	cfm	VPM	kg	lb	kg*cm	in*lb	l/min	cfm	
K15	4500	2,8	6,2	0,02	0,02	9	0,3	5625	5,9	13	0,03	0,03	15	0,5	6672	8,3	18,3	0,03	0,03	21	0,7
K22	2850	9	19,8	0,2	0,17	32	1,1	3450	14,2	31,3	0,21	0,18	50	1,8	4050	19,6	43,2	0,21	0,18	73	2,6
K30	2475	14,8	32,6	43	37,2	45	1,6	3075	24,3	53,6	0,46	0,4	90	3,2	3450	30,6	67,5	0,46	0,4	140	4,9
K45	1800	38,6	85,1	1,07	0,93	56	2	2250	68	149,9	2,4	2,08	125	4,4	2625	92	202,8	2,4	2,08	194	6,8
K60	1200	62	136,7	7,67	6,64	48	1,7	1500	110	242,5	8,76	7,58	125	4,4	1700	141	310,8	8,76	7,58	202	7,1

APPLICATION HOPPER SILO - COMPACTION - VIBRATING FEEDER - TABLE AND CHANNEL

POWDER HYGROSCOPIC - DUSTY AND GRANULAR

PROBLEM SOLVING DETACHING AND COMPACTING

FEATURES

DUTY CICLE CONTINUOUS

WORKING PRESSURE FROM 2 BAR TO 6 BAR (FROM 29 PSI TO 87 PSI)

PNEUMATIC CIRCUIT FILTER+FLOW CONTROL VALVE+LUBRIFICATION+3/2 WAYS VALVE

AIR SUPPLY QUALITY CLASS 5.4.4.

WORKING TEMPERATURE FROM -20°C TO 130°C (FROM -4°F TO 266°F)

MAX NOISE LEVEL 80dB(A)

TECHNOLOGY PISTON PNEUMATIC CUSHIONED

ATEX II 2D cT(x) / II 2G cT(x)

MATERIAL ALUMINUM BODY